



FOR SME BUSINESS

# Quick Installation Guide

G-Series FXS VoIP Gateway



# G-Series FXS VoIP Gateway

Thank you for using the G-Series VoIP Gateway,  
Please read the instructions carefully before using.



G216



G232

ZYCOO G216 and G232 are high-performance FXS analog gateways designed specifically for small and medium-sized enterprises, aiming to deliver high-quality, stable, and reliable voice solutions. The G-Series FXS VoIP Gateways utilize the standard SIP protocol and come equipped with 16/32 FXS ports, allowing you to seamlessly connect analog phones to VoIP networks. Furthermore, the FXS gateways support advanced features such as Remote Configuration, enhancing system setup and troubleshooting efficiency. In terms of security, both of them utilize TLS protocol encryption technology to ensure safety. The simple deployment, user-friendly operation, and easy management features make the G-Series an ideal choice for communication needs in small and medium-sized enterprises.



# CONTENTS

1 .....	<b>Package Contents</b>
2 .....	<b>Hardware Installation</b>
2 .....	Safety Precautions
5 .....	Product Installation
9 .....	Physical Connection
10 .....	LED Definitions
11 .....	<b>Web GUI Access</b>
11 .....	Auto Discover with Zycoo IPPBX
11 .....	Using LAN/WAN Port
12 .....	<b>Further Information</b>

# Package Contents

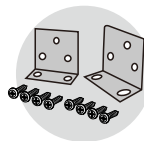
Thank you for purchasing ZYCOO G-Series VoIP Gateway. These are the items included with your VoIP Gateway purchase:



G216/G232 VoIP Gateway  
(1 pcs)



Power Adapter(1 pcs)



Mounting Brackets  
and Fittings(1 pcs)



Network Cable(1 pcs)



Quick Installation Guide  
(1 pcs)



Warranty Card  
(1 pcs)

---

# Hardware Installation



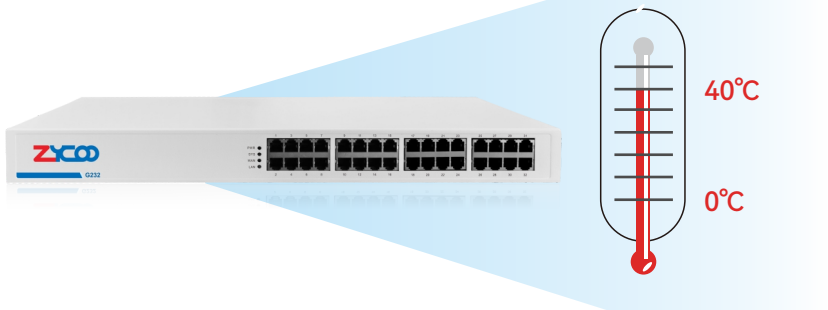
The followings are the instructions for setting up ZYCOO G116/G232 FXS Gateway. Please refer to the illustration and follow the simple steps below to quickly install your VoIP Gateway.

## ► Safety Precautions

To avoid any device damage and Body injury caused by improper use, please observe the following rules.

- 1 Please make sure that the power is kept off during the whole installation process.
- 2 Wear an ESD-preventive wrist strap, and make sure that the wrist strap has a good skin contact and is well grounded.
- 3 The device works only under the correct power supply. Please confirm that the power supply is consistent with the voltage marked by the device, and it is suggested to use the included power supply.
- 4 Before the device is powered on, please confirm that the power circuit will not be overloaded so as not to cause unnecessary damage.
- 5 To avoid the risk of electric shock, do not open the casing when the device is working!
- 6 Before cleaning the device, cut off the power supply. Do not clean it with a waterish material; never use any other liquid cleaning method.

## Site Requirements



To ensure normal operation and long service life of the device, please install it in an environment that meets the requirements described in the following subsection. Please keep a proper temperature and humidity in the equipment room. Too high/low humidity may lead to bad insulation, electricity leakage, mechanical property changes and corrosions. Too high temperature may accelerate aging of the insulation materials and can thus significantly shorten the service life of the device. For normal temperature and humidity of the device, please check the following table.

Environment	Temperature	Humidity
Operating	0°C~40°C	10%~90% RH Non-condensing
Storage	-40°C~70°C	5%~90% RH Non-condensing

## Clearness



The dust accumulated on VoIP Gateway can be absorbed by static electricity and result in poor contact of metal contact points. Some measures have been taken for the device to prevent static electricity, but too strong static electricity can cause deadly damage to the electronic elements on the internal circuit board. To avoid the effect of static electricity on the operation of VoIP Gateway, please attach much importance to the following items:

- ① Dust the device regularly, and keep the indoor air clean.
- ② Keep the device well grounded and ensure static electricity has been transferred.

## I Electromagnetic Interference



Electronic elements including capacitance and inductance on the device can be affected by external interferences, such as conducted emission by capacitance coupling, inductance coupling, and impedance coupling. To decrease the interferences, please make sure to take the following measures:

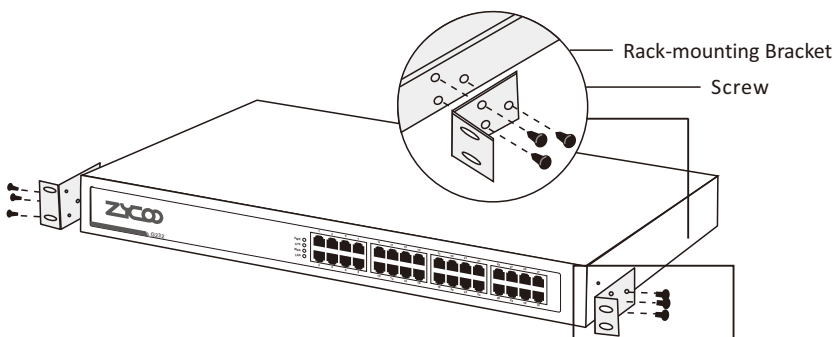
- ① Use the power supply that can effectively filter interference from the power grid.
- ② Keep the devices far from high-frequency, strong-current devices, such as radio transmitting station.
- ③ Use electromagnetic shielding when necessary.

## ► Product Installation

### I Rack Installation

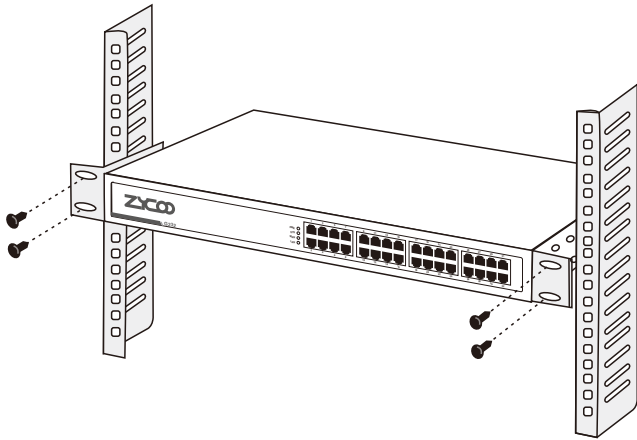
To install the device in an EIA standard-sized, 19-inch rack, follow the instructions described below:

- 1 Check the grounding and stability of the rack.
- 2 Secure the supplied rack-mounting brackets to each side of the device with supplied screws as illustrated in the following figure.



- 3 Install VoIP Gateway to the right place in the rack, and then attach the brackets to the device.





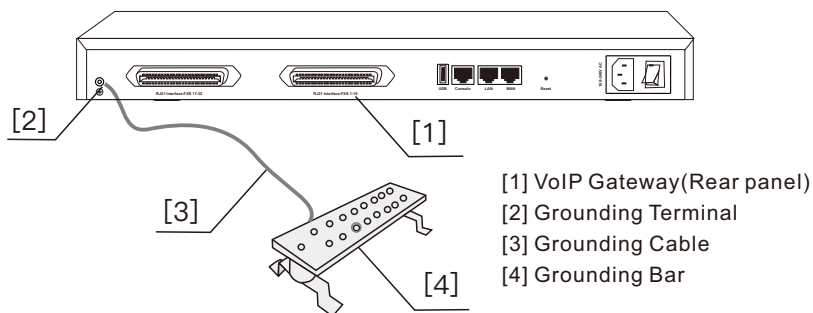
- 3 After the brackets are attached to the device, use suitable screws (not provided) to secure the brackets to the rack, as illustrated in the following figure.

### Notes:

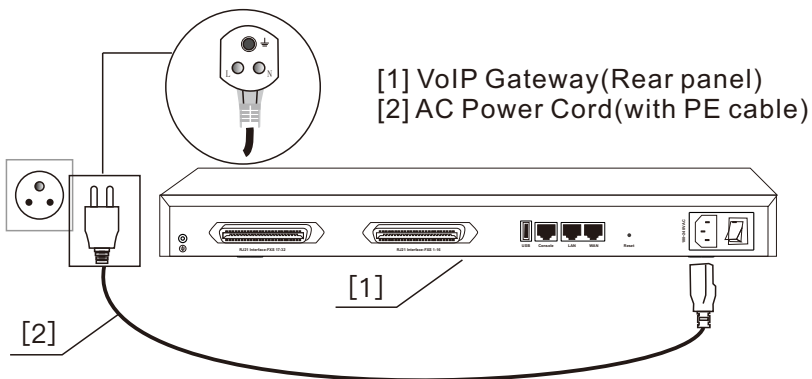
1. Please ensure the correct installation for the grounding of the rack, which is the most important guarantee of avoiding ESD, electricity leakage, lightening, and electromagnetic interference;
2. Please mount devices in sequence from the bottom to top of the rack to avoid overloading;
3. Please avoid any heavy things placed on the device to prevent any unexpected accidents;
4. Please ensure heat dissipation and air circulation;
5. Recommended installation height not exceeding 2 metres.

## Connect to Ground

- 1 Connecting the device to ground is to quickly release the lightning over-voltage and over-current of the device, which is also a necessary measure to prevent human injury from electric shock.
- 2 In different environments, the device may be grounded differently. Two measures are given in the following, of which the Grounding bar is better for the protection of lightening. Users can try to choose the most appropriate measure according to different situation.
- 3 If the VoIP Gateway is installed in the machine room, and the room has dedicated Grounding bar, then the using of ground wire to connect the device with the Grounding bar is put to the first consideration as shown in the following figure.



- ④ If the device is installed in the normal environment, the device can be grounded via the PE (Protecting Earth) cable of the AC power supply as shown in the following figure.

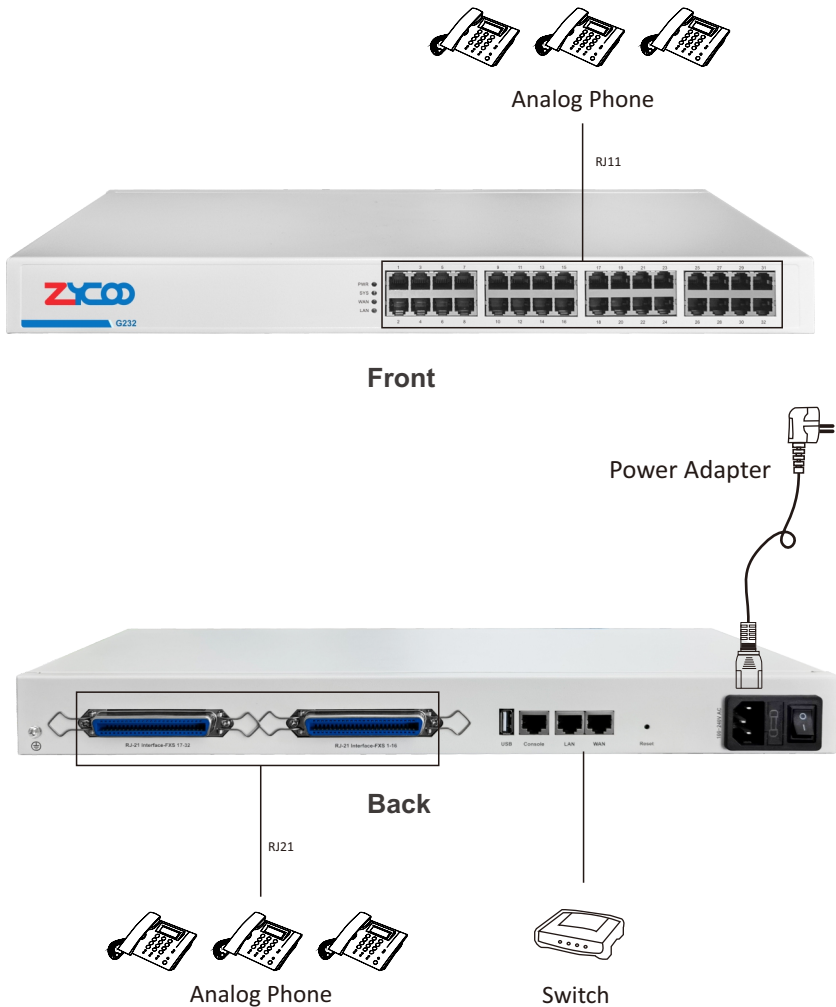


### Notes:

If you intend to connect the device to the ground via the PE (Protecting Earth) cable of AC power cord, please make sure the PE (Protecting Earth) cable in the electrical outlet is well grounded in advance.

## ► Physical Connection

\* Take G232 as an example



## ► LED Definitions

Indication	Function	Status	Explanation
PWR	Power Status	On	Power On
		Off	Power Off
SYS	System Status	Blink	System Works
		Off	System Failure
		On	System doesn't boot
WAN	WAN Data Status	Blink	Data Transfer
		Off	Disconnected
		On	Connected but no data transfer
LAN	LAN Data Status	Blink	Data Transfer
		Off	Disconnected
		ON	Connected but no data transfer

---

# Web GUI Access



## ▶ Auto-discover with Zycoo IP PBX


If you are using CooVox T series IPPBX, and the IPPBX and the gateway are both deployed in the same network segment under the same local network, please open Addons -> Exbox -> G2 Gateway in the web GUI, then use the scan feature to search and discover the gateway address.

## ▶ Using LAN/WAN port

- 1 Open a web browser, preferably Firefox, Google Chrome, or Edge.
- 2 Enter the gateway's default IP address into the browser address bar to access the web interface. LAN port: **http://192.168.10.100**; WAN port defaults in DHCP, if DHCP fails, it will default to **http://192.168.1.101**;
- 3 You may notice a browser security warning. Please ignore the notice and process to access the gateway web interface.
- 4 Use the default login credential to access the gateway. After logging in, please change the administrator password in time to ensure system security.  
Default username & password: **admin**

---

## Further Configuration



Thank you for the purchase of ZYCOO products. The above steps are basic configurations for G216/G232 FXS Gateway. For further configurations, please refer to the user manual. If you have other questions, please contact the ZYCOO local dealers or distributors from where you purchased this product.

# Leading IP Phone System Provider

## **Zycoo Communications LLC**

---

[www.zycoo.com](http://www.zycoo.com)

© 2023 Zycoo Communications LLC All rights reserved